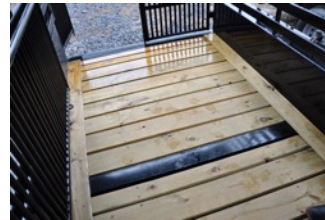


G.V.W.R	14,000 # or 21,000#	CENTER GATE	Heavy Duty Gate with vertical runners & slam latch
COUPLER	2 5/16" Gooseneck Coupler	REAR DOOR	Heavy Duty Butterfly Cattle Gates with Pipe Latch
AXLES	Tandem 7,000# or Triple 7000#	REAR OPENING	Heavy Duty 3x5 Tubing Uprights
SUSPENSION	Dexter Torflex Suspension	REAR BUMPER	Steel Pipe
BRAKES	Electric brakes on all axles	GOOSENECK GATE	None
TIRE	16" Radial	FENDERS	3/16" Solid Steel Plate - Brush Fenders
WHEEL	16", 8-bolt	WINDOWS	None
SPARE	Full Spare with Carrier	WIRING	14 gauge in Conduit with Junction Box
FRAME	3 x 3 Angle	ELECTRIC PLUG	7-Way RV Style
GOOSENECK	Tandems use 8" Channel, Triples use 10" Channel	INTERIOR LIGHTS	None
FRONT UPRIGHT	6" Channel with Pipe Bow Reinforcement	EXTERIOR LIGHTS	All DOT Required Lighting plus Quad Tail Lights
CROSSMEMBERS	4" channel on 4' centers with three - 3" channel runners	PRE-PREP	3-Step Acid Washed with Phosphorus Solution
JACK	12,00# Drop Leg Jack (Spring-Loaded)	PRIMER	Rust Resistant Epoxy Primer
FLOOR	2" Pressure Treated Pine, crossways with spaces	PAINT (BAKED-ON)	Baked-on High Solid Urethane
SIDES	Open Sides with 1x3 tubing runners	PINSTRIPES	Painted Pinstripes
SIDE UPRIGHTS	Steel Pipe Bows	DECK HEIGHT	Approx. 14"
SIDE DOOR	36" Wide, Full Escape Door	GRAVEL GUARD	Aluminum Diamondplate
ROOF	Pipe Bows with Supporting Steel Rods	REFLECTIVE TAPE	Required D.O.T. Reflective Taping
ROOF RADIUS	6" Roof Radius	SAFETY	Emergency Breakaway switch & battery backup
NOSE	Open Cage	SAFETY CHAINS	3/8' Heavy Duty with Safety Latch Hooks

SHOWN WITH TAN CANVAS



Shown with Steel Top

SUGGESTED RETAIL PRICE

Length	Width	Height	Center Gate	Axle	Tires	MSRP
16'	6'8"	6'6"	Set in Center	Tandem 7000 # Torsion	16" Radial	\$10,251
18'	6'8"	6'6"	Set in Center	Tandem 7000 # Torsion	16" Radial	\$10,656
20'	6'8"	6'6"	Set in Center	Tandem 7000 # Torsion	16" Radial	\$11,060
24'	6'8"	6'6"	2 Gates	Tandem 7000 # Torsion	16" Radial	\$11,869
26'	6'8"	6'6"	2 Gates	Tandem 7000 # Torsion	16" Radial	\$12,274
28'	6'8"	6'6"	2 Gates	Tandem 7000 # Torsion	16" Radial	\$12,677
30'	6'8"	6'6"	2 Gates	TRIPLE 7000 # Torsion	16" Radial	\$14,465
32'	6'8"	6'6"	2 Gates	TRIPLE 7000 # Torsion	16" Radial	\$14,870
34'	6'8"	6'6"	2 Gates	TRIPLE 7000 # Torsion	16" Radial	\$15,275
36'	6'8"	6'6"	2 Gates	TRIPLE 7000 # Torsion	16" Radial	\$15,679

OPTIONS PRICING

7' OR 7' 6" Width	\$1,292	Full Swing Rear Gate with 1/2 Slider	N/C
6" Additional Height (per 6")	\$527	Extra Center Gate	\$475
Add for Canvas Top (per trailer ft.)	\$28	Upgrade to 10K (single tires)	\$2,005
Add for Metal Top (per trailer ft.)	\$43	Heavy-Duty Cleated Rubber Floor (per ft of trailer length)	\$77
7200# Axle upgrade (9/16" studs, Oil Bath, 12 1/4" x 2 1/4"), each	\$667	Full Nose (to the point where frame tapers down)	\$563
Spring Axles (in lieu of Torsion Axles), deduct	-\$247	Rear LED Light Bar	\$227
Extra 7,000 Lb. Axle (tandem axle models only)	\$1,375		
Upgrade to 8,000 Lb. Axle (each)	\$1,003		