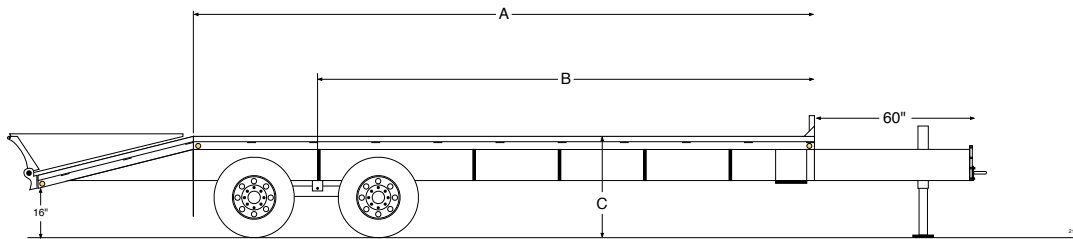


G.V.W.R	25,400#	ELECTRIC PLUG	7-Way RV Style
COUPLER	4-Bolt Adjustable Pintle Ring	PREP	3-Step Acid Washed with Phosphorus Solution
AXLES	Tandem 12,000# Dual Wheel (Oil-Bath)	PRIMER	Rust Resistant Epoxy Primer
SUSPENSION	Multi-leaf Slipper Spring with Equalizer	PAINT	High Solid Urethane
TIRE	S/T235/80R16 (10 ply)	PINSTRIPES	Painted Pinstripes
WHEEL	16 x 6 Dual 8-bolt	OVERALL WIDTH	102" wide (approx)
FRAME	12" I-Beam	DECK HEIGHT	Approx. 38" standard
NECK	12" I-Beam	BRAKES	Electric brakes on all axles
CROSSMEMBERS	3" Channel on 16" centers	DOVE TAIL	Your choice of 3 different Dove Tail styles
SAFETY CHAINS	3/8" Heavy Duty with Safety Latch Hooks	STEPS	Access Step on driver's side
JACK	12,000# Spring Loaded Drop Leg Jack	STORAGE	Chain Basket in A-Frame
SIDE RAILS	5" Angle Iron with Rub Rails	WIRING	Front Mount in conduit
STAKE POCKETS	Formed Stake Pockets on 24" centers	REFLECTIVE TAPE	Required D.O.T. Reflective Taping
FLOOR	2" Pressure Treated Pine	SAFETY	Emergency Breakaway switch & battery backup
LIGHTS	All LED Stop, Tail, Turn and Clearance		All specifications subject to change without notice.

Measurements

when equipped with 5' dove tail



Length	A	B	C
16	132	122"	38"
20	180	154"	38"
22	204	170"	38"
24	228	176"	38"
25	240	176"	38"
26	252	188"	38"
28	276	204"	38"
30	300	220"	38"
32	324	236"	38"
35	360	249"	38"
36	372	274"	38"
40	420	311"	38"
45	480	347"	38"

All measurements are approximate

SUGGESTED RETAIL PRICE

Model	Length	MSRP
212GN-25	25'	\$13,121
212GN-28	28'	\$13,617
212GN-30	30'	\$13,948
212GN-32	32'	\$14,321
212GN-35	35'	\$14,886
212GN-40	40'	\$15,962

DOVE TAIL CHOICES

Dove Tail	Type	Description	MSRP
DT 1	5' ADJUSTABLE includes 2 - 5' Ramps with load-assist legs	Entire 5' Dove Tail platform can be locked in up or down position, with air-assist cylinder	\$303
DT 2	5' SELF-CLEANING includes 2 - 5' spring-assist Ramps with load-assist legs	Full dove tail constructed of angle iron	N/C
		<i>Optional Center Ramp on Self-Cleaning Dove Tail</i>	\$257
DT 3	5' CENTER-LIFT includes 2 - 5' spring-assist Ramps with load-assist legs	Center platform raises automatically (with gas-pressure cylinder) so full dove tail is deck level when ramps are in stored position.	\$652
D'TSR	SUPER RAMPS includes 2 - 5' extra wide spring-assist Ramps	2 - Extra Wide Ramps provide added versatility. Dual spring loaded for Super easy operation, includes diamond plate ramp deck	\$652
DT-S	STRAIGHT DECK	No dove tail, no ramps	-\$200

Overall trailer length includes dove tail length

212PH OPTIONS PRICING

Electric over Hydraulic Brakes	\$2,000	Torque Tube (helps minimize trailer twisting)	\$14/ft.
Disc Brakes (Must add Electric over Hydraulic Brakes)	\$1,910	Pierced Beam (Low-Profile Trailer)	\$6/ft.
Dexter HD Adjustable Suspension (similar to Hutch)	\$600	Metal Floor (3/16" Diamondplate with crossmembers on 12" cen-	\$79/ft.
Lid for Chain Basket	\$79	Spare Wheel	\$105
Side Mount Toolbox with lid (18" x 14" x 36")	\$345	Spare (Complete Tire & Wheel)	\$279
Extra Spring Loaded Jack (Dual Jacks)	\$235	Upgrade to 12", 22 lbs. I-Beam	\$17/ft.
2-Speed Jack System (includes 2nd Jack)	\$426	Upgrade to 14-ply radial tires	\$156/tire
Convert to Electric Jack (ea.)	\$789	Weld-on Ratchets	\$65
Convert to Hydraulic Jacks (ea.) (2 jacks including pump)	\$2,825	Ratchet Rail (per 6' length)	\$136/ea
8' Slide-in Ramps (on Straight Deck trailer only - no dove tail)	\$491	Steel Diamondplate over Ramp Backs (per ramp)	\$71
Full Deck over Gooseneck	\$1,521	Extra 12K axle	\$3,483
Pipe Spools (between Stake Pockets)	\$130	Upgrade to 15K axles (tandem) with 17.5 Tires	\$3,820
		Blackwood (rubber infused lumber) excellent traction	\$48/ft.