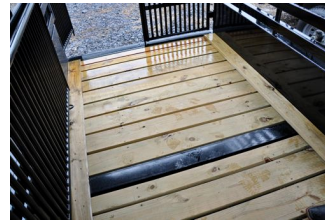


|                      |  |                         |  |
|----------------------|--|-------------------------|--|
| <b>G.V.W.R</b>       | 14,000 # or 21,000#                                      | <b>CENTER GATE</b>      | Heavy Duty Gate with vertical runners & slam latch |
| <b>COUPLER</b>       | 2 5/16" Gooseneck Coupler                                | <b>REAR DOOR</b>        | Heavy Duty Butterfly Cattle Gates with Pipe Latch  |
| <b>AXLES</b>         | Tandem 7,000# or Triple 7000#                            | <b>REAR OPENING</b>     | Heavy Duty 3x5 Tubing Uprights                     |
| <b>SUSPENSION</b>    | <b>Dexter</b> Torflex Suspension                         | <b>REAR BUMPER</b>      | Steel Pipe   |
| <b>BRAKES</b>        | Electric brakes on all axles                             | <b>GOOSENECK GATE</b>   | None   |
| <b>TIRE</b>          | 16" Radial   | <b>FENDERS</b>          | 3/16" Solid Steel Plate - Brush Fenders            |
| <b>WHEEL</b>         | 16", 8-bolt  | <b>WINDOWS</b>          | None   |
| <b>SPARE</b>         | <b>Full Spare with Carrier</b>                           | <b>WIRING</b>           | 14 gauge in Conduit with Junction Box              |
| <b>FRAME</b>         | 3 x 3 Angle  | <b>ELECTRIC PLUG</b>    | 7-Way RV Style                                     |
| <b>GOOSENECK</b>     | Tandems use 8" Channel, Triples use 10" Channel          | <b>INTERIOR LIGHTS</b>  | Standard Dome Lights                               |
| <b>FRONT UPRIGHT</b> | 6" Channel with Pipe Bow Reinforcement                   | <b>EXTERIOR LIGHTS</b>  | All DOT Required Lighting plus Quad Tail Lights    |
| <b>CROSSMEMBERS</b>  | 4" channel on 4' centers with three - 3" channel runners | <b>PRE-PREP</b>         | 3-Step Acid Washed with Phosphorus Solution        |
| <b>JACK</b>          | 12,00# Drop Leg Jack (Spring -Loaded)                    | <b>PRIMER</b>           | Dupont Rust Resistant Primer                       |
| <b>FLOOR</b>         | 2" Pressure Treated Pine, crossways with spaces          | <b>PAINT (BAKED-ON)</b> | Dupont Automotive-grade High Solid Urethane        |
| <b>SIDES</b>         | Open Sides with 1x3 tubing runners                       | <b>PINSTRIPES</b>       | Painted Pinstripes                                 |
| <b>SIDE UPRIGHTS</b> | Steel Pipe Bows  | <b>DECK HEIGHT</b>      | Approx. 14"  |
| <b>SIDE DOOR</b>     | 36" Wide, Full Escape Door                               | <b>GRAVEL GUARD</b>     | Aluminum Diamondplate                              |
| <b>ROOF</b>          | Pipe Bows with Supporting Steel Rods                     | <b>REFLECTIVE TAPE</b>  | Required D.O.T. Reflective Taping                  |
| <b>ROOF RADIUS</b>   | 6" Roof Radius   | <b>SAFETY</b>           | Emergency Breakaway switch & battery backup        |
| <b>NOSE</b>          | Open Cage  | <b>SAFETY CHAINS</b>    | 3/8' Heavy Duty with Safety Latch Hooks            |

Shown with Canvas Top



Shown with Steel Top

## SUGGESTED RETAIL PRICE

| Length | Width | Height | Center Gate   | Axle                         | Tires      | MSRP     |
|--------|-------|--------|---------------|------------------------------|------------|----------|
| 16'    | 6'8"  | 6'6"   | Set in Center | Tandem 7000 # Torsion        | 16" Radial | \$8,525  |
| 18'    | 6'8"  | 6'6"   | Set in Center | Tandem 7000 # Torsion        | 16" Radial | \$8,874  |
| 20'    | 6'8"  | 6'6"   | Set in Center | Tandem 7000 # Torsion        | 16" Radial | \$9,223  |
| 22'    | 6'8"  | 6'6"   | Set in Center | Tandem 7000 # Torsion        | 16" Radial | \$9,572  |
| 24'    | 6'8"  | 6'6"   | 2 Gates       | Tandem 7000 # Torsion        | 16" Radial | \$9,921  |
| 26'    | 6'8"  | 6'6"   | 2 Gates       | Tandem 7000 # Torsion        | 16" Radial | \$10,270 |
| 28'    | 6'8"  | 6'6"   | 2 Gates       | Tandem 7000 # Torsion        | 16" Radial | \$10,618 |
| 30'    | 6'8"  | 6'6"   | 2 Gates       | <b>TRIPLE</b> 7000 # Torsion | 16" Radial | \$12,161 |
| 32'    | 6'8"  | 6'6"   | 2 Gates       | <b>TRIPLE</b> 7000 # Torsion | 16" Radial | \$12,510 |
| 34'    | 6'8"  | 6'6"   | 2 Gates       | <b>TRIPLE</b> 7000 # Torsion | 16" Radial | \$12,859 |
| 36'    | 6'8"  | 6'6"   | 2 Gates       | <b>TRIPLE</b> 7000 # Torsion | 16" Radial | \$13,208 |

## OPTIONS PRICING

|  | Included |
|--|----------|
| 6'8" Width   |          |
| 6" Additional Height (per 6")                                      | \$454    |
| Add for Canvas Top (per trailer ft.)                               | \$24     |
| Add for Metal Top (per trailer ft.)                                | \$37     |
| 7200# Axle upgrade (9/16" studs, Oil Bath, 12 1/4" x 2 1/4"), each | \$575    |

|   |       |
|---|-------|
| Full Spare (Tire & Wheel)                           | \$216 |
| Solid Rear Gate (no slider), <b>deduct</b>          | \$238 |
| Full Swing Rear Gate with 1/2 Slider, <b>deduct</b> | \$238 |
| Full Rear Drop Ramp (with mat)                      | \$438 |