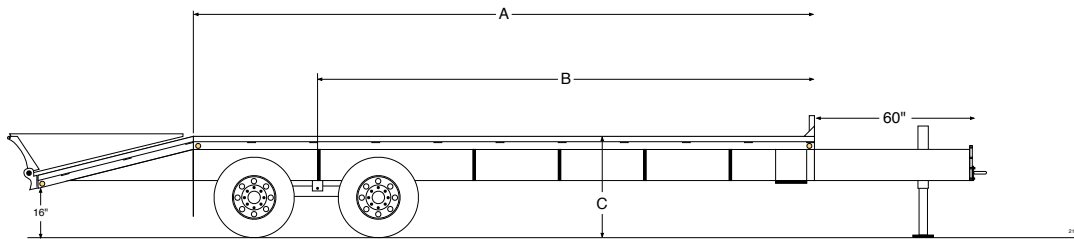


|                      |  |                        |  |
|----------------------|--|------------------------|--|
| <b>G.V.W.R</b>       | 23,400#                                  | <b>ELECTRIC PLUG</b>   | 7-Way RV Style                                       |
| <b>COUPLER</b>       | 4-Bolt Adjustable Pintle Ring            | <b>PREP</b>            | 3-Step Acid Washed with Phosphorus Solution          |
| <b>AXLES</b>         | Tandem 10,000# Dual Wheel (Oil-Bath)     | <b>PRIMER</b>          | Rust Resistant Epoxy Primer                          |
| <b>SUSPENSION</b>    | Multi-leaf Slipper Spring with Equalizer | <b>PAINT</b>           | High Solid Urethane                                  |
| <b>TIRE</b>          | ST235/80R16 (10 ply)                     | <b>PINSTRIPES</b>      | Painted Pinstripes                                   |
| <b>WHEEL</b>         | 16 x 6 Dual 8-bolt                       | <b>OVERALL WIDTH</b>   | 102" wide (approx)                                   |
| <b>FRAME</b>         | 12" I-Beam                               | <b>DECK HEIGHT</b>     | Approx. 38" standard                                 |
| <b>NECK</b>          | 12" I-Beam                               | <b>BRAKES</b>          | Electric brakes on all axles                         |
| <b>CROSSMEMBERS</b>  | 3" Channel on 16" centers                | <b>DOVE TAIL</b>       | Your choice of 3 different Dove Tail styles          |
| <b>SAFETY CHAINS</b> | 3/8" Heavy Duty with Safety Latch Hooks  | <b>STEPS</b>           | Access Step on driver's side                         |
| <b>JACK</b>          | 12,000# Spring Loaded Drop Leg Jack      | <b>STORAGE</b>         | Chain Basket in A-Frame                              |
| <b>SIDE RAILS</b>    | 5" Angle Iron with Rub Rails             | <b>WIRING</b>          | Front Mount in conduit                               |
| <b>STAKE POCKETS</b> | Formed Stake Pockets on 24" centers      | <b>REFLECTIVE TAPE</b> | Required D.O.T. Reflective Taping                    |
| <b>FLOOR</b>         | 2" Pressure Treated Pine                 | <b>SAFETY</b>          | Emergency Breakaway switch & battery backup          |
| <b>LIGHTS</b>        | All LED Stop, Tail, Turn and Clearance   |                        | All specifications subject to change without notice. |

### Measurements

when equipped with 5' dove tail



| Length | A   | B    | C   |
|--------|-----|------|-----|
| 16     | 132 | 122" | 38" |
| 20     | 180 | 154" | 38" |
| 22     | 204 | 170" | 38" |
| 24     | 228 | 176" | 38" |
| 25     | 240 | 176" | 38" |
| 26     | 252 | 188" | 38" |
| 28     | 276 | 204" | 38" |
| 30     | 300 | 220" | 38" |
| 32     | 324 | 236" | 38" |
| 35     | 360 | 249" | 38" |
| 36     | 372 | 280" | 38" |
| 40     | 420 | 305" | 38" |
| 45     | 480 | 341" | 38" |

All measurements are approximate

### SUGGESTED RETAIL PRICE

| Model    | Length | MSRP     |
|----------|--------|----------|
| 210GN-25 | 25'    | \$10,339 |
| 210GN-28 | 28'    | \$10,835 |
| 210GN-30 | 30'    | \$11,164 |
| 210GN-32 | 32'    | \$11,541 |
| 210GN-35 | 35'    | \$12,106 |
| 210GN-40 | 40'    | \$13,182 |

### DOVE TAIL CHOICES

| Dove Tail | Type   | Description  | MSRP   |
|-----------|--|--|--------|
| DT 1      | <b>5' ADJUSTABLE</b><br>includes 2 - 5' Ramps with load-assist legs                  | Entire 5' Dove Tail platform can be locked in up or down position, with air-assist cylinder  | \$303  |
| DT 2      | <b>5' SELF-CLEANING</b><br>includes 2 - 5' spring-assist Ramps with load-assist legs | Full dove tail constructed of angle iron   | N/C    |
|           |  | <i>Optional Center Ramp on Self-Cleaning Dove Tail</i>   | \$257  |
| DT 3      | <b>5' CENTER-LIFT</b><br>includes 2 - 5' spring-assist Ramps with load-assist legs   | Center platform raises automatically (with gas-pressure cylinder) so full dove tail is deck level when ramps are in stored position. | \$652  |
| D'TSR     | <b>SUPER RAMPS</b><br>includes 2 - 5' extra wide spring-assist Ramps                 | 2 - Extra Wide Ramps provide added versatility. Dual spring loaded for Super easy operation, includes diamond plate ramp deck        | \$652  |
| DT-S      | <b>STRAIGHT DECK</b>   | No dove tail, no ramps   | -\$200 |

Overall trailer length includes dove tail length

### 210PH OPTIONS PRICING

|  |         |   |            |
|--|---------|---|------------|
| Electric over Hydraulic Brakes                                   | \$2,000 | Torque Tube (helps minimize trailer twisting)                 | \$14/ft.   |
| Disc Brakes (Includes 10K HD) (must add elec/hyd. brake)         | \$1,910 | Pierced Beam (Low-Profile Trailer)                            | \$6/ft.    |
| Dexter HD Adjustable Suspension (similar to Hutch)               | \$600   | Metal Floor (3/16" Diamondplate with crossmembers on 12" cen- | \$79/ft.   |
| Lid for Chain Basket   | \$79    | Spare Wheel   | \$105      |
| Side Mount Toolbox with lid (18" x 14" x 36")                    | \$345   | Spare (Complete Tire & Wheel)                                 | \$279      |
| Extra Spring Loaded Jack (Dual Jacks)                            | \$235   | Blackwood (rubber infused lumber) excellent traction          | \$48/ft.   |
| 2-Speed Jack System (includes 2nd Jack)                          | \$426   | Upgrade to 12", 22 lbs. I-Beam                                | \$17/ft.   |
| Convert to Electric Jack (ea.)                                   | \$789   | Upgrade to 14-ply radial tires                                | \$156/tire |
| Convert to Hydraulic Jack (ea.)                                  | \$1,091 | Weld-on Ratchets  | \$65       |
| 8' Slide-in Ramps (on Straight Deck trailer only - no dove tail) | \$491   | Ratchet Rail (per 6' length)                                  | \$136/ea   |
| Pipe Spools (between Stake Pockets)                              | \$130   | Steel Diamondplate over Ramp Backs (per ramp)                 | \$71       |
|  |         | Extra 10K axle  | \$2,215    |